



PACIFICA PARTNERS

Pacifica Women of the Evangelical Lutheran Church in America



Helen Riggs, Editor

APRIL 2008

Volume 19, Number 4

Be refreshed. Be inspired. Be connected. Come to the Waters!

The largest gathering of women in the Evangelical Lutheran Church in America will be held at the Salt Palace Convention Center in Salt Lake City this summer and you need to be there. This is a gift you *must* give yourself. This weekend of July 10-13, 2008 will teach, encourage, and challenge you to a greater understanding of your faith and what it means to live it out as together we are called to act boldly on our faith in Jesus Christ.



At "Come to the Waters," Women of the ELCA's 7th Triennial Gathering, we will celebrate the life-giving waters of our baptism and be renewed in our commitment to share God's living waters with others. Our featured speaker Sister Joan Chittister (left), Bible study presenter the Rev. Karen Bockelman, and preachers the Rev. Elizabeth Eaton, the Rev. Heidi Neumark, and the Rev. Marysol Diaz will bring their gifts to explore various dimensions of our theme.



As with past gatherings, there will be workshops — this time there will be two for girls only — and opportunity to share in-kind gifts, explore the exhibit hall, and take part in servant opportunities and another run/walk/roll to support our Raising Up Healthy Women and Girls initiative.

Our host city, Salt Lake City, combines the best of being a major city with Western small-town friendliness. The surrounding area offers an abundance of natural beauty and places of historical interest. Optional tours will also be offered before and after the gathering.

Organize a group from your congregation! There are women who have never taken part in an event like this and who would be uplifted and strengthened by experiencing this gathering. An invitation is all they need. Your synod's triennial gathering promoter can help, too! **Contact Melissa Anderson at (909) 864-5607 who is our Triennial Promoter.** Some synods are arranging group transportation. Registration booklets can be requested at any time. Call us at 800-638-3522, ext. 2730, or e-mail Women.ELCA@elca.org. You also can download and print the registration booklet from this Web site (see link at right) and register online. Bring yourself. Bring your niece, daughter, granddaughter, or friend. Bring a group. We'll meet you at the Salt Palace in July 2008.

At "Come to the Waters," Women of the ELCA's 7th Triennial Gathering, we will celebrate the life-giving waters of our baptism and be renewed in our commitment to share God's living waters with others. Our featured speaker Sister Joan Chittister (left), Bible study presenter the Rev. Karen Bockelman, and preachers the Rev. Elizabeth Eaton, the Rev. Heidi Neumark, and the Rev. Marysol Diaz will bring their gifts to explore various dimensions of our theme.

As with past gatherings, there will be workshops — this time there will be two for girls only — and opportunity to share in-kind gifts, explore the exhibit hall, and take part in servant opportunities and another run/walk/roll to support our Raising Up Healthy Women and Girls initiative.

Our host city, Salt Lake City, combines the best of being a major city with Western small-town friendliness. The surrounding area offers an abundance of natural beauty and places of historical interest. Optional tours will also be offered before and after the gathering.

CALENDAR OF EVENTS

**Saturday, April 19, 2008 Son & Surf, Saddleback & Re-
joice Clusters will hold the cluster event at Bethlehem
Lutheran Church, Los Alamitos.**

Theme "NEW BEGINNINGS"

**\$6.00 collected at the door. Lunch will be served. Contact
Mary Ann Messick by April 13th at (949) 240-7772**

**Big Bear, Raincross & Mariposa, Eden Lutheran Church
on April 19th. Flier in previous newsletter**

**SUNSHINE/WEST CLUSTER EVENT
SATURDAY, MAY 3, 2008**

**CHRIST LUTHERAN CHURCH
4761 CASS STREET, PACIFIC BEACH**

"PATHWAYS TO WHOLENESS"

Registration: 9:30 - Program: 10:00

\$5.00

Lunch: 12:00 in Garman Hall.

Each Church is asked to bring items for the Salad Bar.
Salad Greens and Rolls will be furnished.

RSVP: Joyce Boutte, 619-462-6734 by April 28.

When submitting your cluster events, be sure that you get them to the editor in plenty of time prior to the event. Allow time for the newsletter to be printed and mailed. Thank you.

Pacifica Synod Assembly—May 1-3 at the Irvine Marriott

**Pacifica Synod has moved into their new home—Lutheran
Center for Mission & Learning located at:
1801-C Parkcourt Place, Santa Ana 92701
Telephone numbers remain the same.**



* **Monday Prayer at Noon** is a weekly opportunity to join in prayer with women throughout the United States, the Caribbean, and Canada. Check www.womenoftheelca.org for specific weekly prayer concerns.

PACIFICA PARTNERS provides news and information to congregational units of the Pacifica Synod. *Pacifica Partners* is published monthly except for July/August and November/December, which are combined issues. Copies are distributed as a courtesy to each congregational unit (CU) in the Pacifica Synod. It is also sent to Women of the ELCA churchwide office, other SWO presidents, Synodical Bishop, current and former board members.

Address changes and corrections should be sent to the Secretary:

Becky Shurson
13848 Meadow View Lane
Yucaipa, CA 92399

Deadline for news is the **first** of the month prior to the month of publication.

PURPOSE STATEMENT

Women of the Evangelical Lutheran Church in America

As a community of women, created in the image of God, called to discipleship in Jesus Christ, and empowered by the Holy Spirit.

We commit ourselves to grow in faith, affirm our gifts, support one another in our callings, engage in ministry and action, and promote healing and wholeness in the church, the society and the world.



Since last month's writing our convention planning team has not met again so we really don't have new details to unfold. But we are meeting in April so keep looking and listening for more to come. And of course place it on your calendar for November 7-9 and really plan to come and enjoy and bring many more women with you! It won't hurt at all to go back to the last issue of Pacifica Partners and reread the first nuggets of information.

Meanwhile our clusters have Saturday morning events planned. Clusters are simply groupings of units in a smaller geographical area within each synod. Their purpose is to

- a. provide experience for learning and leadership development;
- b. build community;
- c. provide opportunities for joint ministry and action;
- d. provide opportunities for stewardship education and offerings; and
- e. establish networks for communication.

Raincross, Mariposa, and Big Bear Clusters' event is April 19th at Eden Lutheran in Riverside. Also meeting on the 19th are Son and Surf, Saddleback, and Rejoice Clusters at Bethlehem Lutheran in Los Alamitos. Harvest Cluster meets April 26th at King of Kings in Oceanside. And then May 3rd will be Sunshine/West Cluster meeting at Christ Lutheran in Pacific Beach. We often refer to the geographic areas as the Inland Empire, Orange County, and North San Diego and South San Diego. As of this moment three of the events have flyers on our web site, www.pacificawomen.org. Go to News and Events and then Calendar and then click on the underlined words beginning with "Cluster Event" under each date. There are also links to directions etc. Get a copy of the flyer or flyers into as many of your women's hands as possible. You don't need a special invitation to attend one or more the events outside of your own geographical area – simply call or email the contact person named on

the flyers. Each planned event has a different focus and program so attend as many as you are able!

And of course don't forget about "Come to the Waters" in Salt Lake City in July. There is still room for many more women to come and experience a churchwide triennial gathering. Our Lord has promised to be with us even when only two or three are gathered. That two or three may happen in your units. But then it grows to a larger group at cluster events, to a hundred or more for our Pacifica convention. Then can you imagine what it is like to have a couple thousand or more women gathered in His name?! It is always pretty awesome and you will cherish the time of learning, worship, fellowship, fun and even the travel part and possibly sight seeing in the area. You can find a wealth of information at www.womenoftheelca.org but be sure to contact Melissa Anderson, our triennial gathering promoter.

She can be reached at custernut@aol.com via email or by phone at 909-864-5607. Even if you have all the info you need she would like to know you are going and she can get you all the info you need if you are still looking.

Did your unit send a 20th Anniversary offering to our Women of the ELCA? Our churchwide executive board met recently and the results were reported there. I've sent that report to our editor so read the results of that offering – we as women together acting boldly on our faith in Jesus Christ, can do some amazing things!

ACTING BOLDLY IN CHRIST!

Eunice

In-kind gift options for "Come to the Waters"

From phone cards and national retailer gift cards, to assembling health kits and quilts, these are but some of the options you have. Make your choice(s) today and continue the tradition of Women of the ELCA making a difference in people's lives.



We extend our sympathy to Ruth Bergstrom on the recent passing of her husband John on March 7, 2008.

Ruth was the first president of the Pacifica SWO and she also served as secretary for the CW board and she also served for many years as the convention parliamentarian.

If you would like to send a note to Ruth her address is: 536 Nautilus St., La Jolla 92037.

LWR needs quilts, kits

Thanks to the generosity of women's groups throughout the church, Lutheran World Relief is able to provide quilts, kits, and soap to people in need around the globe. Now LWR is asking women, youth, Sunday school classes, and entire congregations to go an extra mile to help meet the current and anticipated needs in the global community, especially in Mauritania, Peru, Azerbaijan, Uganda, and Thailand.

Quilts, health kits, school kits, soap, layettes, and sewing kits are among the needs. Then drop a note to Women.ELCA@elca.org to let us know how you are responding.



Health kits prepared by women of the ELCA are prepared for shipment at the Lutheran World Relief warehouse.

Last year showed a significant increase in the number of quilts requested by our partners — 452,870, the most we distributed in a year since 1999," said Trevor Knoblich, LWR's program associate for material resources. Knoblich manages the warehouse inventories of quilts, kits, and layettes, and works with LWR's partner organizations in shipping the items to their final destinations.

"In 2008, requests have increased even further for quilts and kits of all types," Knoblich said. "So our current inventories are not able to meet the needs expressed by our overseas partners. We'll need many more quilts and kits to fulfill the requests we've received already, plus the other requests that are sure to come."

"When it comes to making quilts and assembling kits and layettes, the generosity of U.S. Lutherans is unstoppable," said Brenda Meier, LWR's director for parish and community engagement. "That's why we're putting out the call for more quilts and kits, confident that they will respond."

"Even a few more quilts or kits from each congregation already making them would be significant," said Meier. "Even better, if congregations not already involved would start a group to make quilts or kits, our inventories would increase to meet the demands from our partners."

"Assembling school, health, or sewing kits is a great activity for youth groups, confirmation classes, Sunday school classes," said Meier. "It's a great way to nurture community within a congregation, and also strengthen a connection to the global community. Making kits and quilts can even be a great family pro-

ject; it's a good lesson in compassion and sharing for children," she added.

Currently, LWR has several shipments requested from partners responding to humanitarian needs in Africa, Latin America, and Asia:

Mauritania is expecting refugees who were expelled in 1989-1990 to Senegal and Mali, to begin returning; quilts, health kits and school kits will help families reintegrate into their lives in their homeland and continue with their children's education.

Uganda is bracing for an influx of refugees due to the ongoing violence in Kenya. Health kits, school kits, sewing kits, and soap will equip refugee camps with supplies to respond to the needs of the newly arriving refugees.

Thailand receives an annual shipment of quilts and layettes for camps housing Burmese refugees. Cold, damp conditions in the camps, located in remote mountainous regions of Thailand, make the warmth of a quilt comforting and life-saving.

Azerbaijan struggles with supporting large populations of internally displaced persons (IDPs) who live in cold conditions with limited access to food and water.

Quilts will help keep people warm and provide a handmade gift they can cherish. Sewing kits provide an opportunity to make clothes to wear or sell.

Peru's impoverished families will be comforted and encouraged by quilts, health kits, and school kits as part of an annual shipment from Lutheran World Relief.

Instructions for making quilts, kits, or layettes are available on the LWR Web site at www.lwr.org/parish. Please consider helping us meet this growing need around the world!

The complete 2007 quilts and kits shipping report is available online at www.lwr.org/parish or by calling the LWR Resource Center at 1-800-LWR-LWR-2. Also available from the Resource Center is "Ordinary to Extraordinary," a 12-minute video chronicling the distribution of a shipment of quilts, kits, layettes and soap throughout Mali, West Africa.



Churchwide president: triennial experience always memorable, special

by Carmen Richards

When I think about my first triennial experience, what stands out immediately is all the people I met. And that began at registration, with those wonderful people whom I had first contact with. Maybe that's not what you would expect, but those nonetheless are my first thoughts (plus how important the workers in those jobs are).

I remember walking into the main room where worship was being held, and it was so impressive. I could feel a oneness with God at worship, even though I was in an enormous room full of people. I remember my heart just about busting, it was so emotional.

I volunteered to help with workshops, and that was another way to both meet the ladies and meet the presenters. I remember the great variety of workshops and all the rooms overflowing with people.

One of my many memories about the week was feeling welcomed everywhere I went. The fact that you could go anywhere and you could have a conversation with anyone and feel welcomed was just incredible. I remember that on the plane ride home, too, the pilot knew his plane was about half full of Women of the ELCA. I guess you could say we were bold (and noisy)!

Singing at worship was definitely an ÒahaÓ moment. Being with all the women of color was also different, a good different for me, considering where I'm from.

My last convention was a much different one because of my role in it, yet it still held those same feelings about worship, workshops, etc. With my daughter having just passed away, I found the experience was even deeper, much deeper. It is really hard to explain, but everything meant more—including the people. (Here we go about the people again!) I looked deeper into their eyes, heard more deeply the words they said, and knew that in the sadness I was going through and the processing that went with it, I wasn't alone. The convention and gathering was an environment in which to be held, to be surrounded by women who care.

But no matter what picture I try to paint for you, it is an experience you have to have for yourself. So I invite you to ÒCome to the WatersÓ and experience the community of women that is a Women of the ELCA triennial. I hope to see you there!

Carmen Richards is churchwide president of Women of the ELCA, 2005–2008.

[Reprinted with permission from Interchange, the churchwide newsletter of Women of the ELCA, Copyright 2008, Women of the Evangelical Church in America]

The U In Jesus

Before U were thought of or time had begun,
God stuck U in the name of His Son.

And each time U pray, you'll see it's true,
You can't spell out JesUs and not include U.

You're a pretty big part of His wonderful name,
For U, He was born; that's why He came.

And His great love for U is the reason He died.
It even takes U to spell crUcified.

Isn't it thrilling and splendidly grand
He rose from the dead, with U in his plan?

The stones split away, the golf trUmpet blew,
And this world resUrrection is spelled with a U.

When JesUs left earth at His upward ascension,
He felt there was one thing He just had to mention

'Go into the world and tell them it's true
That I love them all - Just like I love U.

So many great people are spelled with a U.
Don't they have a right to know JesUs too?

It all depends now on what U will do.
He'd like them to know, But it all starts with U.

[this was shared by Sharon Middleton, church secretary at Our Saviors, Banning]

Multigenerational Women of the Evangelical Lutheran Church of America

In most Lutheran families there are at least two generations, mother and daughter.

In my family there are three generations, grandmother, mother and daughter. We are all active members of our small Lutheran church. My mother is on the council, and helps with various parts of the church service. I am the church newsletter editor, schedule volunteer efforts for the Sunday services and assist the minister on some Sundays. My daughter sings the kyrie each Sunday and helps to play the music for our worship songs. She is also the youth member on our church council.

As a family our church life is a large part of our family life. We worship as a family every Sunday, my mother and daughter attend council meetings on Tuesdays. Wednesday finds us at our church bible study. Mr. Pastor our female Pastor's husband cooks a different feast every week and we have a bible study which includes kids as little as 4 and adults in their 70's and 80's. It is always lively and educational.

Churches need to build in opportunities for families to be engaged in activities on many levels at the same time. An organization that wants to grow and sustain itself also must seek to get all generations involved in its activities. Women of the ELCA has been trying to do this in small ways. At the convention in Hawaii several families had more than one generation attending and participating in the activities at convention. This past year when the convention was in Anaheim there were several mothers who felt comfortable enough to bring their children and participate as delegates. I think these are positive steps forward for our organization. In planning for next years convention in Vista, the Convention Planning Team is exploring having activities for daughters as well as mothers and options for childcare. These changes will allow more women to take an active role in Women of the ELCA in the future and help to keep it strong.

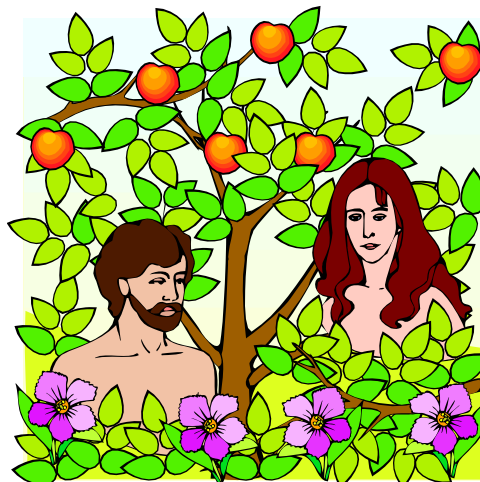
Aloha Juli Patten

10 Top Reasons why God Created Eve

1. God worried that Adam would frequently become lost in the garden because he would not ask for directions.
2. God knew that Adam would one day require someone to locate and hand him the TV remote.
3. God knew that Adam would never go out and get himself a new fig leaf when his seat wore out and would therefore need Eve to get one for him.
4. God knew that Adam would never be able to make a doctor's, dentist or haircut appointment for himself.
5. God knew that Adam would never be able to remember which night to put the garbage on the curb.
6. God knew that if the world was to be populated, men would never be able to hand the pain and discomfort of childbearing.
7. As Keeper of the Garden, Adam would never remember where he left his tools.
8. Apparently, Adam needed someone to blame his troubles on when God caught him hiding in the garden.
9. As the Bible says, It is not good for man to be alone!

And finally, the number ONE reason that God created Eve.....

10. When God finished the creation of Adam, He stepped back, scratched his head and said, "I can do better than that"



Websites to Check Out

'www.pacificasynod.org' (Pacifica Synod)

'www.elca.org' (This will access the national churchwide office)

'www.womenoftheelca.org' (NOTE: new domain name for churchwide website of the Women of the ELCA; *Café*, for free website for women 20-35 is part of this website.)



'www.lutheranwomantoday.org' (This website will access the LWT magazine directly.)

'www.lwr.org' (ever wanted to know where the quilts go that your units have made or the school and health kits that you assembled and sent to Lutheran World Relief?)

'www.hisrosesandthorns.com' (a Christian website of Wanda Scott Bledsor and Janet Sannipoli)

'www.thebreastcancersite.com' (Click on this site once a day to provide free mamograms for those who otherwise would not be able to have them.)

'www.creative-memories.com/suzanne_kusik' (Your Memory Album and Business Coach—Suzanne Kusik—Creative Memories Consultant, 714-968-4808)

'www.giveaminute.org' (Click on this site once a day and the sponsors will contribute funds for a minute of care for the needy Indian children of the Tarahumara Children's Hospital in Creel, Mexico. The site has a mission information link and photo gallery which shows pictures of the area as well as some of the children. This site also links to the Hunger Site where the sponsors will give a cup of grain for a daily click.)

'www.bread.org' (Bread for the World for information.)

If you know of a website that would be of interest to others feel free to let me know inclusion in this area.

E-mail to helen.riggs1@verizon.net

The Deadline is.....

May 1, 2008 *Pacifica Partners 2008*

PACIFICA WOMEN OF THE ELCA 2008 Synodical Board Members

President Eunice Hanson
3627 Cerro Avenue, Oceanside, CA 92056
760-945-9716, e-mail: eunicehanson@cox.net

Vice President Keala Simoes
518 Cummins St., Honolulu, HI 96814
808-261-8844, e-mail: bosseyboots@hawaii.rr.com

Secretary Becky Shurson
13848 Meadow View Lane, Yucaipa, CA 92399
909-790-4864, e-mail bshurson@verizon.net

Treasurer Andrea Campbell
6555 Jaluit Street, Cypress, CA 90630
714-891-2556, e-mail: campbell6555@earthlink.net

Board Members

Viola Angebrandt
1380 W. 48th Street, Unit 36
San Bernardino, CA 92407 909-887-0799
e-mail: idiotic_puppy@earthlink.net

Sue Bodenschatz
2306 W. Hemlock, Santa Ana, CA 92704
714-754-6925 e-mail: mamaschatz_99@yahoo.com

Lynda McClellan
4996 Via Campeche, Riverside, CA 92507
951-788-3934, e-mail: LKMC4996@sbcglobal.net

Therese Moore
15401 Don Roberto Rd., Victorville, CA 92394
760-955-5517, e-mail: pacificawoman@earthlink.net

Juli Patten
84-740 Kili Dr. #1123, Waianae, HI 96792
808-696-4980 e-mail: alohaboo@hawaii.rr.com

Violet Quist
13300 Del Monte Dr. #7-M, Seal Bch, CA 90740
562-431-8339, e-mail: violetquist@peoplepc.com

Karen Ronchetti
8305 Magic Circle, Huntington Beach, CA 92646
714-654-8919 e-mail: jhbower@verizon.net

Inga Sanders
16370 Jupiter Circle, Westminster, CA 92683
949-679-2990, e-mail: inga.sanders@tristargroup.net



WHAT'S INSIDE

Come to the Waters	Page 1
Calendar of Events	Page 2
President's Message	Page 3
LWR Needs Quilts	Page 4
Message from Carmen Richards	Page 5
Multigenerational Women	Page 6
Directory	Page 7



Dated Material—Please Do Not Delay
Return Service Requested

NON-PROFIT
ORGANIZATION
U.S. POSTAGE PAID
Banning, CA
PERMIT No. 30

Pacifica Synodical Women's Organization of the
Women of the Evangelical Lutheran Church in America
5446 Trevino Way
Banning, CA 92220-6459